

Family-friendly mountain huts

- 1 **ASSENHÜTTE** ☎
Tel. +39 347 5308364
- 2 **BACHLERHOF** 🍷 🍴 🚶 🚰 🚰
Tel. +39 0473 949515
- 3 **CAFE AM WAAL** 🍷 🍴 🚶 🚰 🚰
Tel. +39 0473 310424, www.cafeamwaal.it
- 4 **GREITERERHOF** 🍷 🍴 🚶 🚰 🚰
Tel. +39 0473 945976, www.greitererhof.it
- 5 **GRUBE** 🍷 🍴 🚶 🚰 🚰
Tel. +39 0473 949404, www.gasthofgrube.com
- 6 **GSTEIER** 🍷 🍴 🚶 🚰 🚰 Tel. +39 0473 235062,
www.hohenwart.com/en/guesthouse-gsteier/
- 7 **HAASHOF** 🍷 🍴 🚶 🚰 🚰
Tel. +39 0473 949509, www.haashof.it
- 8 **HIALSLBAUER** 🍷 🍴 🚶 🚰 🚰
Tel. +39 0473 949452
- 9 **HINTEREGGALM** 🍷 🍴 🚶 🚰 🚰
Tel. +39 375 7790196
- 10 **HIRZERHÜTTE** 🍷 🍴 🚶 🚰 🚰
Tel. +39 330 515900, www.hirzerhuette.com
- 11 **HOLZNERHOF** 🍷 🍴 🚶 🚰 🚰
Tel. +39 0473 945948, www.holznerhof.schenna.com
- 12 **IFINGERHÜTTE** 🍷 🍴 🚶 🚰 🚰
Tel. +39 334 7960781
- 13 **LEITEN ALM** 🍷 🍴 🚶 🚰 🚰
Tel. +39 333 9051465
- 14 **MAHD-ALM** 🍷 🍴 🚶 🚰 🚰
Tel. +39 348 7934572
- 15 **OBBERKIRN** 🍷 🍴 🚶 🚰 🚰
Tel. +39 0473 949459, www.obberkirn.it
- 16 **OFENBAUR** 🍷 🍴 🚶 🚰 🚰
Tel. +39 334 7315104, www.ofenbaur.com
- 17 **RASTLHOF** 🍷 🍴 🚶 🚰 🚰
Tel. +39 0473 945657, www.rastlhof.com
- 18 **RESEGGER ALM** 🍷 🍴 🚶 🚰 🚰
Tel. +39 347 1869512, www.resegger-alm.com
- 19 **SALFGUT** 🍷 🍴 🚶 🚰 🚰
Tel. +39 0473 945680
- 20 **SCHNUGGER HOF** 🍷 🍴 🚶 🚰 🚰
Tel. +39 0473 945859
- 21 **STAFELL ALM** 🍷 🍴 🚶 🚰 🚰
Tel. +39 338 8038580
- 22 **STERNECK** 🍷 🍴 🚶 🚰 🚰
Tel. +39 0473 949529
- 23 **STREITWEIDE** 🍷 🍴 🚶 🚰 🚰
Tel. +39 333 9757363, www.streitweideralm.it
- 24 **TASER ALM** 🍷 🍴 🚶 🚰 🚰
Tel. +39 0473 945615, www.taseralm.com
- 25 **UNTERMEINLECHNER** 🍷 🍴 🚶 🚰 🚰
Tel. +39 0473 949722
- 26 **WAALERHÜTTE** 🍷 🍴 🚶 🚰 🚰
Tel. +39 348 9227655
- 27 **ZMAILER** 🍷 🍴 🚶 🚰 🚰
Tel. +39 0473 945881

Our family-friendly restaurants

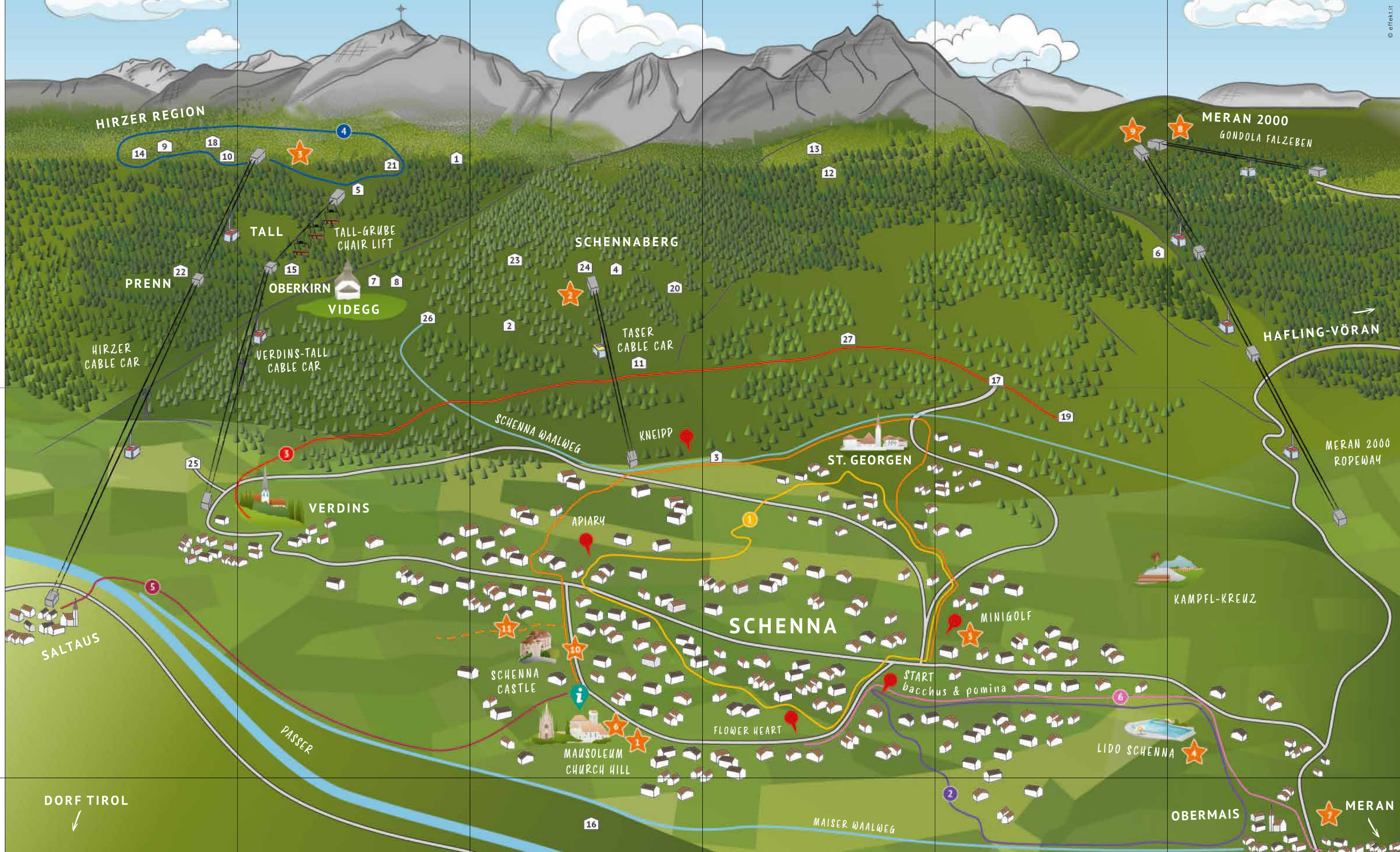
Schenna boasts a wide selection of pubs, stube, bistros and restaurants – ranging from hearty South Tyrolean fare to classic Italian pizzerias. They cater to children's menus and include play corners, sandpits, playrooms or outdoor playgrounds. High chairs and babies' changing tables available.



Legend

- 🕒 Walking time
- 📏 Path length
- ⚡ Hight
- ⬆️ Rise
- ⬆️ Descend
- 🚰 Path accessible with pushchairs
- 🚰 Path partially accessible with pushchairs
- 🚰 Path not accessible with pushchairs
- ❄️ Path accessible in winter
- 🚰 Path not accessible in winter
- 👶 Playground/Sandbox
- 👶 Children's meals
- 👶 High chairs
- 👶 Changing facilities
- 👶 Farm animals

- 🟡 easy: easy hike with low difficulty
- 🟠 medium difficulty: moderately difficult hike



1 bacchus & pomina The New APPLE TRAIL

🕒 ca. 2 h 📏 3.7 km ⚡ 172 m 🟡 🚰 🚰

Do you know which colour is invisible to bees? Along the bacchus & pomina Apple Trail, with its interactive stations and informative placards, you will find a wealth of interesting facts about the history of Schenna and this fruit-farming region. Besides a beehive and apple sound effects, there are also inviting farm shops where visitors can try some of the local delicacies.

Starting in the town centre, the bacchus & pomina Apple Trail leads down the Wiesen-street behind the Hotel Schennerhof up to the Verdins-street just before the Petermann Pizzeria. Follow the trail to the Auellerhof, past the Loth and Krebs farmsteads to the district of St. Georgen, which overlooks the city of Meran. From here, the route leads down to the Rodelstein children's playground and back to the starting point along St.-Georgener-street. Paid parking: in the village centre.



2 bacchus & pomina The New WINE TRAIL

🕒 ca. 2 h 📏 5.3 km ⚡ 188 m 🟡 🚰 🚰

More than twenty interactive stations describe and illustrate the work that goes into the vineyards – offering insights and an overview of the local history while revealing some curious facts about the noble vine.

Along the route are a number of unusual points of interest, including an "aromatic" station. A stopover at the local wine estates and farm shops lining the route is a must. From its starting point in the village centre, the themed bacchus & pomina route leads down the Katnaueg and Leiterweg trails past the Innerleiterhof wine estate to join with the Maier Waalweg irrigation channel path. Follow the path running alongside the canal as it winds its way down to the Maier Waalweg. Continue on the Haslerweg trail passing through Tschogassl before arriving at the Lido Schenna outdoor pool. The Mitterplattweg trail leads back to the starting point. Paid parking: in the village centre.



3 The HÖFEWEG Trail on the Schenna Mountain

🕒 ca. 3 h 📏 8.6 km ⚡ 412 m ⚡ 615 m 🟡 🚰 🚰

Passing a number of farms the Höfeweg Trail looks out on the panoramic terrain above Schenna. Offering spectacular views of Meran and the surrounding cultural landscape, one gains an impression of what life on a mountain farm is like. Starting from the Verdins parish church head along Wiesesteig trail #16 to the Hofweg trail past the Hoferhof farm as far as Vallplatz and Holzner. After the Zmailer, Rastl and Salfgut farms the trail finally brings you to St. Georgen and back to the centre of Schenna. The Schenna-Verdins bus line number 231 operates regularly. Paid parking: in Verdins.



4 The ALMENWEG Mountain Pasture Trail in the Hirzer Region

🕒 ca. 3.5 h 📏 9.7 km ⚡ 542 m 🟡 🚰 🚰

This hike taking you up to the Hirzer Alpine pastures is at its best in summer, when Alpine rose flowers tinge the mountain meadows in vivid shades of red. First take the Verdins-Tall cable car and then switch to the Grube chairlift that takes you to the Gasthof Grube inn. Follow the path as it gently ascends to Klammeben before joining trail #40 that leads to the Hirzerhütte refuge. From there, follow the European E5 long-distance trail to the Hintereggalm and Mahd-Alm mountain pastures. The path to the Mahd-Alm is accessible with a pushchair. Then take trail #2B up a gentle incline to the Rotmoos. The trail continues through lush grassland awash with Alpine flowers to the Tallneralm mountain pasture before crossing the "Sonntagsweide" to the Stafell Alm pasture. Return via trail #7 to the Grube chairlift mountain station to Tall. Please note that each chairlift can only accommodate one adult, children (up to the age of 8) are permitted to sit on the lap of a parent. The Schenna-Verdins bus line number 231 operates regularly. Parking: Verdins-Tall cable car.

5 MAISER WAALWEG Irrigation Canals Trail

🕒 ca. 2 h 📏 6.7 km ⚡ 283 m 🟡 🚰 🚰

The Waalwege are trails running along the old irrigation canals (Waal in German) to facilitate their maintenance. The system of irrigation canals was created to bring much-needed mountain water to irrigate the dry slopes for farming. The canal system enabled the volume of water supplied to each farmer to be controlled. Starting at the Schenna Tourist Office, this mostly flat hike leads through meadows and woodlands along the Maier Waalweg trail. Signposted as trail #10B, the Rothalerweg leads down to the Maier Waalweg trail. Follow this predominantly shaded path through mixed forests and orchards, past the Waalerhaus to the Hirzer cableway valley station to Saltaus. The no. 240 Saltaus-Meran & no. 231 Meran-Schenna bus lines operate regularly.



6 Across the MITTERPLATTWEG Trail to Meran

🕒 ca. 1 h 📏 4.4 km ⚡ 254 m 🟡 🚰 🚰

The sun-drenched Mitterplattweg promenade leads through apple orchards and vineyards. Panoramic views included. The charming town of Meran is easily reachable on foot: starting at the Schenna village centre, the Katnaueg branches off to the right at the Schennerhof. Soon you'll reach the neat Mitterplattweg panoramic path that leads south to the Lido Schenna outdoor pool. Passing through the apple orchards, the Tschogassl takes you past the Oberhaslerhof farm to Planta Castle of Obermais. Arrive at the Meran city centre following the sunny Schönblick-street on the promenade along the Passer river. Two flights of stairs necessitate careful handling for pushchairs.





1

Sunnys Family Program

During the Schenna holiday season a variety of exciting and educational activity options are on offer. Together with Elisabeth Taibon Karnutsch (herbalist, qualified local nature/landscape guide, and kindergarten teacher) the Schenna Tourist Office offers a rich didactical, games and adventure program.

For further details contact the Schenna Tourist Office, and/or see: www.schenna.com/family

Sign up at the Schenna Tourist Office. An entry fee is charged per activity.

Sporting Activities

Outdoor Pool Schenna Lido

A day's outing at the Schenna outdoor pool is certainly worth your while, even if only to enjoy the magnificent views of the spa town of Meran and surrounds. With a large and welcoming sunbathing lawn, ample outdoor pool (including slide and baby pool), the recreational area remains open from the end of May to the beginning of September.

www.lidoschenna.it

Bowling

Anyone capable of hitting all 9 tenpins in one shot? Good luck! Whether you're competing or just for sheer enjoyment, take advantage of Schenna Lido's four automated bowling alleys.

www.lidoschenna.it

Tennis

Play to win! In its sunny location with floodlights illuminating the courts for evening tennis games, this outdoor facility offers two well maintained clay courts open daily to the public. Beginners, advanced players, and tournament players can either learn the rudiments of the game or perfect their techniques in individual or group training sessions. Weekly children's summer tennis camps offer plenty of fun and exercise.

www.mapatennis.com



7

Gardens of Trauttmansdorff Castle

Home to more than 100,000 different plants, the Gardens of Trauttmansdorff Castle lie on a sunny slope above Meran just 5 minutes by car/bus away from Schenna. With the Castle dominating these gardens, the paths around it were once walked by Empress Sissi during her Meran summer holidays. Nowadays, the castle houses the Touriseum. Children's attractions include the aviary with its dazzling green and blue mountain parrots, an adventure rope

bridge swaying above the alluvial forest, a multimedia experience in the grotto (graphically portraying the origins of life) and a labyrinthian garden. Titled the "Botanical Underworld", the 200m long adventure trail through the rock provides visitors with a thrilling experience.

www.trauttmansdorff.it



8

Winter Fun at the Meran 2000 Skiing and Hiking Area

The nearby Meran 2000 skiing and hiking area is an ideal family-friendly winter holiday destination. Ideal for leisurely winter hikes, classic skiing and thrilling sled runs, the sunny spots and cosy huts invite relaxation in a white winter setting. During the ski season, the Meran 2000 ski school offers private lessons, special children's courses and group beginner's courses.

www.meran2000.com



9

THE SAGENWEG Trail of Legends

The wooded region between Thurnerhof and Schenna Castle is home to a strange cluster of mysterious figures. A face-to-face encounter with these eery wood-carved statues is sure to get your imagination going. The Schenna Trail of Legends also features a game that enables passers-by to generate sounds from a wooden instrument. The circuit trail starts and finishes at the local school.

www.meran2000.com

Fun and Excitement at the Taser Alm

2

To reach the Taser Alm mountain pasture at 1,450 m you'll need to take the cable car. Discover this outdoor mountain adventure paradise, with its archery range (sign up at the reception), a small mountain zoo (including dwarf goats, lamas, alpacas, ponies and rabbits) as well as an American

Indian village. Embark on more challenging day-long hikes or enjoy leisurely walks in this breath-taking setting. While visiting these magnificent heights, stop at the mountain restaurant with a sumptuous menu with farm-fresh platters.

www.taseralm.com



Outdoor Ice-Skating

Open from November to January, the ice rink in the centre of Schenna promises skating fun for the whole family. Besides a live music programme including shows on ice you can hire skates and take ice skating lessons. Drinks and snacks are available at the stand.

www.schenna.com/ice-skating

6



SCHENNA WAALWEG Irrigation Canals Trail

ca. 2 h 5.4 km 232 m

Nothing to do with whales, the term "waaale" instead derives from the Latin word, "aquale", which means water reservoir. These water canals were built hundreds of years ago by local farmers to irrigate their fields, orchards, and vineyards – especially during the hot summer months. Starting in Schenna, head in direction of the Schennaberg mountain across the Ifingerstraße as far as the Taser cable car / Pichler. Follow the signposts to the Waalweg trail leading south until you'll reach the Café am Waal. There is a Kneipp station on the Waalweg trail. The water treading pool offers a pleasant way to cool off. Accompanied by a marvellous panoramic view over Meran, the trail crosses through meadows and forests above St. Georgen before descending down to Schenna.

10



5

Schenna mini golf

Know what "wheel, seesaw, arch, and verticals" mean? Come and find out at the Schenna mini golf course. Relax in the rock gardens surrounded by trees and flowers.

www.minigolf-schenna.com

Outdoor Kids Camp and AlpinBob at Meran 2000

Open both in summer and winter, the Meran 2000 rail bobsled (at 1.1 km, making it the longest in Italy) offers guaranteed thrills & spills for the whole family! Younger kids between the ages of 4 and 10 must be accompanied by an adult. Just 4 km away from Schenna, the Meran 2000 ropeway brings visitors up to the upper stations. The Outdoor Kids Camp offers instruction to children enabling them to enhance their strength, improve their sense of balance, jumping skills and overall dexterity – in preparation for their upcoming mountain adventure!

www.meran2000.com

11

THE SAGENWEG Trail of Legends

The wooded region between Thurnerhof and Schenna Castle is home to a strange cluster of mysterious figures. A face-to-face encounter with these eery wood-carved statues is sure to get your imagination going. The Schenna Trail of Legends also features a game that enables passers-by to generate sounds from a wooden instrument. The circuit trail starts and finishes at the local school.



What to do when the sun doesn't shine

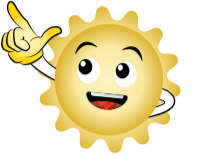
You can visit the Rabland Train World, home to the biggest digitally operated model railway system in Italy. Lose yourself in Gargazon's tropical Orchid World. Visit the South Tyrol Museum of Archaeology in Bozen and immerse yourself in "Ötzi – the Iceman's" ancient mountain world. Or just lie back and soak in the warm thermal waters of the indoor/outdoor pools at the Meran Thermal Baths.

www.eisenbahnwelt.eu | www.raffiner.net | www.iceman.it | www.thermemeran.it



Other recommended family-friendly hiking routes and suggestions for day trips

may be found on the Schenna app or: www.schenna.com/family



schenna



Schenna Tourist Information Office
I-39017 Schenna – Sout Tyrol
Tel. +39 0473 945 669
info@schenna.com · www.schenna.com

IMPRINT Illustration Sunny: Carmen Eisendle / Design & Print: effekt.it

